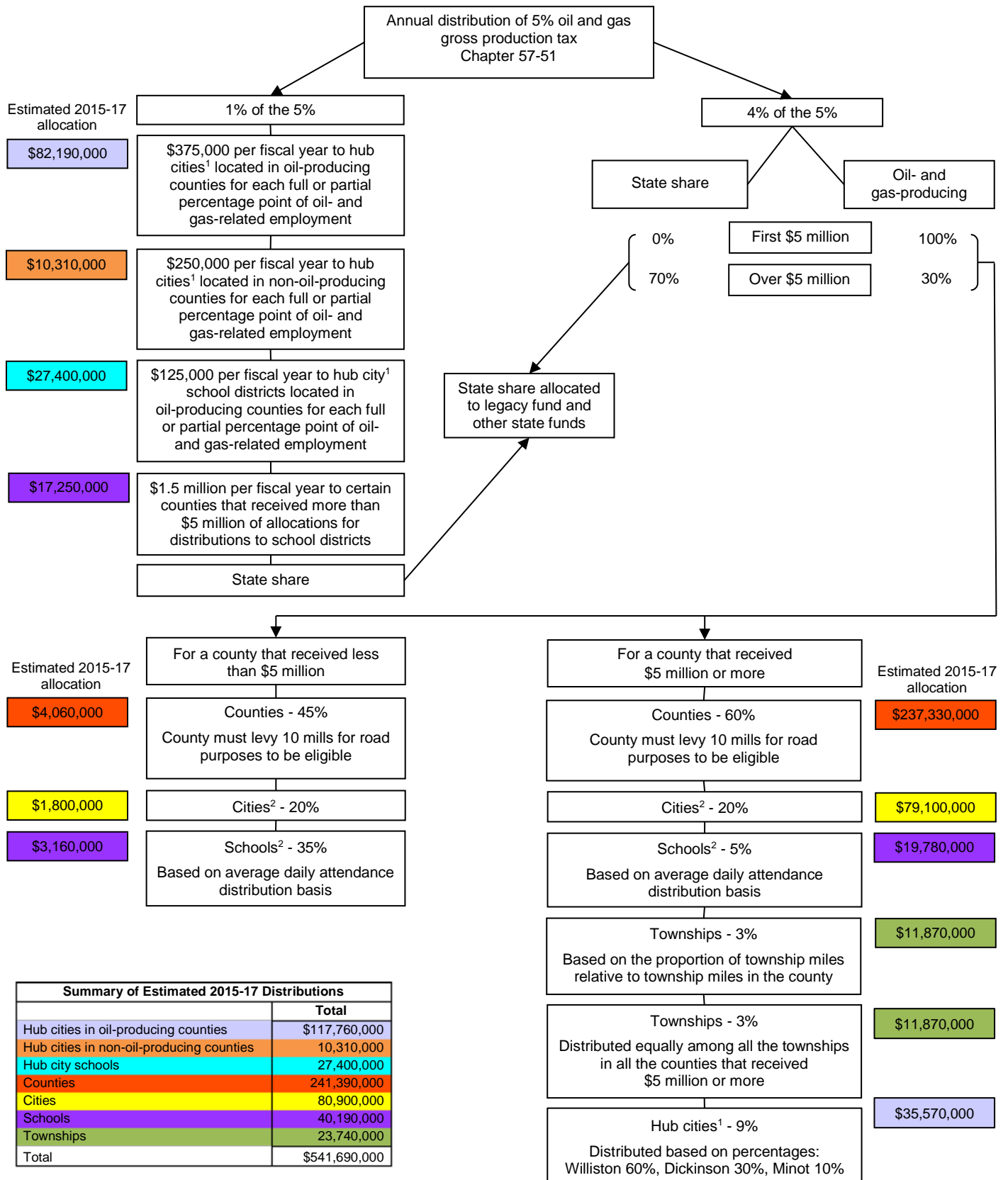


2015-17 BIENNIUM ESTIMATED DISTRIBUTION OF 5 PERCENT OIL AND GAS GROSS PRODUCTION TAX COLLECTIONS



¹A "hub city" means a city with a population of 12,500 or more, according to the last official decennial federal census, which has more than 1 percent of its private covered employment engaged in oil- and gas-related employment, according to data compiled by Job Service North Dakota.

²Hub cities and hub city school districts must be omitted from this apportionment.