

**Southeast Human Service Center**

Jeff Stenseth  
SEHSC Regional Director

---

---

---

---

---

---

---

**Outline**

- HSC and the community
  - Services provided
  - Admissions/Regional Intervention Services (RIS) – community liaison role
  - Contracted Services
  - Relevant Initiatives

---

---

---

---

---

---

---

**Services Provided**

- Admissions
  - Regional Intervention Services (RIS)
  - Central Intake
- Addiction Services
  - Adult – Treatment Mall
  - Adolescence (Including drug court)
- Acute Services
  - Therapy Services
  - Partnership Program
  - Psychology
  - Sexual Abuse Treatment Program

---

---

---

---

---

---

---

### Services Provided

- Medical Services
  - Psychiatric (including 2 afternoons/week at Cass County jail)
  - Nursing Support
- Extended Care (Serious and Persistent Mental Illness)
  - Case Management
    - Outreach (community and rural)
    - Off Main (Dual Diagnosis Treatment Services)
      - Integrated Dual Diagnosis Treatment (IDDT) Teams
      - PATH – Homeless Case Management

---

---

---

---

---

---

---

---

### Regional Intervention Services/Admissions

- Regional Intervention Services (RIS)
  - Transitional Case Management
  - Jail Diversion Staffing
  - Jail Liaison Mental Health Professional
  - Treatment Readiness Service
  - Crisis Response and Assessment
    - Emergency Holds

---

---

---

---

---

---

---

---

### Regional Intervention Services/Admissions

- Regional Intervention Services
  - Coordination of Crisis Psychiatric evaluations
  - Prescreens to the NDSH
  - Investigate Petitions for Involuntary Commitment
  - On-call – evenings/weekends/holidays
    - Phone triage for Mobile Crisis Service

---

---

---

---

---

---

---

---

**Regional Intervention Services/Admissions**

- Central Intake
  - Mental Health and Addiction Intake
  - Comprehensive Diagnostic Assessment
  - Screening for all services
  - Referral and treatment planning
  - Increased community collaboration

---

---

---

---

---

---

---

---

**Community Based Contracted Services**

- Community Based Contracted Services (Dacotah Foundation)
  - ACS (Alternative Care Services)- 15 crisis beds
  - Dakota Pioneer apartments and respite beds – 37 apts
  - Low Intensity Residential Treatment III. I
    - Next Step – 15 beds
    - Serenity Shack - 8 beds
- Case Aide Services
  - Breathalyzers (evening/weekends)
  - Medication Delivery
  - In home Skill Training/Support

---

---

---

---

---

---

---

---

**Community Based Contracted Services**

- Community Based Contracted Services
  - Centre Detox – Social Detox
  - Clay County Receiving Center – Medical Detox
  - New Life Center
  - Mental Health Inpatient – Prairie St. John's and Sanford Health
  - Mobile Crisis Service – Solutions
  - Adult Drug Court – Prairie St. John's

---

---

---

---

---

---

---

---

**Clay County Receiving Center  
(Medical Detox)**

- Field Services Division of the Department of Human Services started a pilot project contract on 6-17-2013
- 10 bed detoxification unit for male and female adult-aged individuals
- Facility provides intensive medically managed detox under the direct supervision of nursing staff and with physician oversight.

---

---

---

---

---

---

---

---

**Clay County Receiving Center  
(Medical Detox)**

- This was made possible because of an interstate agreement between Minnesota and North Dakota.
- Some of the primary limitations set by the interstate agreement relates to admission process.
- Individuals cannot be referred if they are under a ND court order (including Alternative Treatment Order), on probation/parole, or have an active warrant.

---

---

---

---

---

---

---

---

**Clay County Receiving Center  
(Medical Detox)**

- Since the start of contract operations we have averaged 32 detox days per month (length of stay ranges from 1-4 days)
- We have averaged 11 different people being admitted per month.

---

---

---

---

---

---

---

---

**Clay County Receiving Center  
(Medical Detox)**

- Benefits of medical detox longer lengths of stay.
- Gets the individual through the toughest part of their detox
- Allows for more opportunities to engage the individual in considering treatment as a viable option

---

---

---

---

---

---

---

---

**Jail Intervention Coordinating  
Committee  
Post Booking Diversion of  
Persons with Severe Mental Illness**

---

---

---

---

---

---

---

---

**Post-Booking Diversion Program**

- Started in 2006
- Averaging 16 participants per year
- Enhanced Screening introduced to the booking process at the jail
  - Jail Mental Health Coordinator works with detainee and defense attorney and prosecuting attorney about option of this program
  - Judge orders into program under alternative sentencing
  - Regular reviews of progress by Treatment Review Team (clinical staff, probation officers, states attorney, Jail Mental Health Coordinator)

---

---

---

---

---

---

---

---

### Post-Booking Diversion Program

- Typical services provided as part of program
  - Adult case management services
  - Psychiatry services
  - Medication monitoring services
  - Transitional housing services (crisis unit, respite bed, addiction residential)
  - Therapy or psychological services
  - Addiction treatment services (dual diagnosis)
  - Supported employment services

---

---

---

---

---

---

---

---

### Pre-Booking Diversion of Persons with Severe Mental Illness

---

---

---

---

---

---

---

---

### Crisis Intervention Team

- The training is based on the so-called Memphis model, after the pioneering Memphis Police Department partnership with NAMI.
- CIT law enforcement officers help identify persons in need of community service, assist them in getting them connected to those resources and work towards keeping them connected.
- The mission of the CIT program is to equip law enforcement officers with the skills to assist people with mental illness, thereby increasing the likelihood that an individual receives needed treatment rather than incarceration.
- Law enforcement officers are trained to respond immediately, intelligently and compassionately to persons suffering a mental health crisis, rather than waiting for specialized mental health workers, or automatically conveying the person to a jail.

---

---

---

---

---

---

---

---

### Crisis Intervention Team

- By taking an immediate, humane and calm approach, CIT officers reduce the likelihood of physical confrontations (which protects officers, the person, and bystanders) and enhance patient care.
- A percentage of training slots have consistently been reserved for partner agencies including: Prairie St. Johns, Southeast Human Service Center, Sanford Health, FM Ambulance, Dacotah Foundation, City of Fargo, NDSU Police, Fargo Housing Authority, Mental Health America, and Centre Inc.

---

---

---

---

---

---

---

---

### Crisis Intervention Team

- First training in Fargo was completed in November 2010
- Have conducted 9 training sessions to date (including one session for school resource officers)
- Currently provide 2-3 trainings per year sponsored by: Cass County Sheriff's Department, Fargo Police Department, West Fargo Police Department, Prairie St. John's, and Southeast Human Service Center
- 25 participants per training session
- Week long training that includes class room education, skills acquisition, live practical exercises (with hired actors), and one afternoon of field shadowing

---

---

---

---

---

---

---

---

### Crisis Intervention Team

- A percentage of training slots have consistently been reserved for partner agencies including: Prairie St. Johns, Southeast Human Service Center, Sanford Health, FM Ambulance, Dacotah Foundation, City of Fargo, NDSU Police, Fargo Housing Authority, Mental Health America, and Centre Inc.

---

---

---

---

---

---

---

---

**Integrated Dual Disorder Treatment**

---

---

---

---

---

---

---

---

**Integrated Dual Diagnosis Treatment  
Multidisciplinary Team Structure**

- Team Leader
- Case manager(s)
- Psychiatrist
- Nurse
- Case Aide
- Licensed Addiction Counselor
- Mental Health Counselor
- Vocational, Housing, Criminal Justice specialists

*All Work collaboratively on the team with evidence of excellent communication*

---

---

---

---

---

---

---

---

**Improvements in Many Areas**

- Reduced institutionalization
- Reduced symptoms, suicide
- Reduced violence, victimization, legal problems
- Better physical health
- Improved function, work
- Improved relationships and family

---

---

---

---

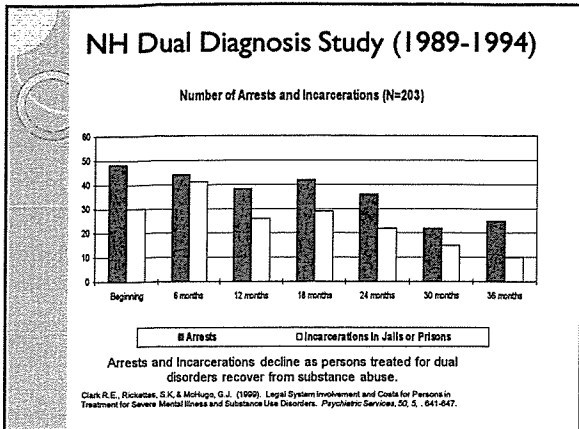
---

---

---

---





---

---

---

---

---

---

---

---

- ### SEHSC Outcomes – Cohort #1
- #### First 12 consumers over 48 months
- #### Years 1 – 4-Comparison
- 29% drop in ER admissions (24-17)
  - 40% drop in crisis bed days (83-50)
  - 70% drop in long term Hospitalization (908-268)
  - 87% drop in respite bed days (94-12)
  - 90% drop in acute psychiatric hospital days (97-10)
  - 98% drop in days incarcerated (199-3)

---

---

---

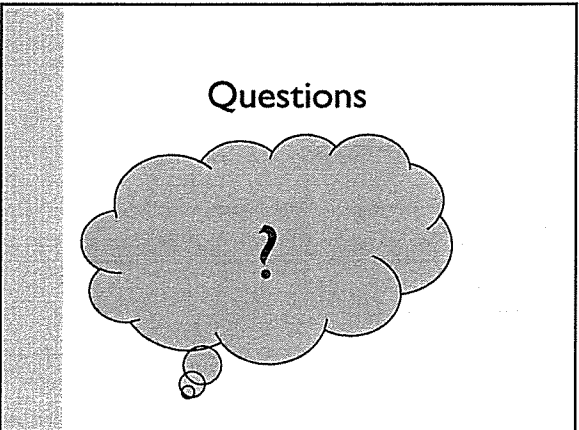
---

---

---

---

---



---

---

---

---

---

---

---

---

| Region/Name of Program          | Who Operates?                    | Population covered      | Bed Capacity | Available in Other Regions? |
|---------------------------------|----------------------------------|-------------------------|--------------|-----------------------------|
| <b>V - Fargo</b>                |                                  |                         |              |                             |
| Crisis Residential Unit         | Dacotah Foundation               | Adult SMI and Addiction | 15           | Yes                         |
| Serenity Shack                  | Dacotah Foundation               | Adult Addiction         | 8            | Yes                         |
| Next Step                       | Dacotah Foundation               | Adult Addiction         | 15           | Yes                         |
| Cooper House                    | Fargo Housing/Dacotah Foundation | Housing First Model     | 42           | No                          |
| Robinson Recovery Center        | Sharehouse                       | Adult Addiction         | 40           | Yes                         |
| Dakotah Pioneer Apartments      | Dacotah Foundation               | Adult SMI and Addiction | 37           | Yes                         |
| Centre Detox                    | Centre Inc.                      | Adult Addiction         | 19           | Yes                         |
| Medical Detox                   | Clay County Public Health        | Adult Addiction         | 10           | No                          |
|                                 |                                  |                         |              |                             |
|                                 |                                  |                         |              |                             |
| <b>VI - Jamestown</b>           |                                  |                         |              |                             |
| Crisis Residential Unit         | Progress Incorporated            | Adult SMI and Addiction | 16           | Yes                         |
| Bridgepoint Transitional Living | Progress Incorporated            | Adult SMI               | 15           | Yes                         |
| Transitional Living Unit        | South Central                    | Adult SMI               | 14           | Yes                         |
| Transitional Living Unit        | North Dakota State Hospital      | Adult SMI               | 15           | Yes                         |
|                                 |                                  |                         |              |                             |
|                                 |                                  |                         |              |                             |
| <b>VII - Bismarck</b>           |                                  |                         |              |                             |
| Alternative Care Services       | Dacotah Foundation               | Adult SMI and addiction | 10           | Yes                         |
| Heritage - long term recovery   | Pride, Inc                       | Adult Addiction         | 7            | No                          |
| Arbor - group home              | Dacotah Foundation               | Adult SMI               | 11           | No                          |
| Sahnish - group home            | Dacotah Foundation               | Adult SMI               | 8            | No                          |
| Supported Living apts-Custer    | Dacotah Foundation               | Adult addiction         | 6            | No                          |
|                                 |                                  |                         |              |                             |
|                                 |                                  |                         |              |                             |
| <b>VIII - Badlands</b>          |                                  |                         |              |                             |
| Residential Care Center         | BLHSC                            | Adult SMI and Addiction | 16           | Yes                         |
|                                 |                                  |                         |              |                             |
|                                 |                                  |                         |              |                             |

| Region/Name of Program          | Who Operates?                   | Population covered        | Bed Capacity | Available in Other Regions? |
|---------------------------------|---------------------------------|---------------------------|--------------|-----------------------------|
| <b>I - Williston</b>            |                                 |                           |              |                             |
| Crisis Residential              | ND Association for the Disabled | Adult SMI or dual diag.   | 4            | Yes                         |
| Transitional Living             | ND Association for the Disabled | Adult SMI or dual diag.   | 2            | Yes                         |
| Supportive Living               | ND Association for the Disabled | Adult addict or dual diag | 3            | Yes                         |
| Missouri View                   | ND Association for the Disabled | Adult SMI                 | 8            | Yes                         |
|                                 |                                 |                           |              |                             |
|                                 |                                 |                           |              |                             |
| <b>II - Minot</b>               |                                 |                           |              |                             |
| Brooklyn Flats                  | Rehab Services                  | Adult Addiction           | 12           | Yes                         |
| Recovery House                  | Rehab Services                  | Adult Addiction           | 7            | Yes                         |
| New Hope                        | Growing Together                | Women with Children       | 10           | Yes                         |
| Hopes House - transitional      | Growing Together                | Adult Addiction           | 9            | Yes                         |
|                                 |                                 |                           |              |                             |
|                                 |                                 |                           |              |                             |
| <b>III - Devils Lake</b>        |                                 |                           |              |                             |
| Crisis Residential Unit         | Progress Incorporated           | Adult SMI and Addiction   | 15           | Yes                         |
| Crisis Residential Unit - Rolla | Progress Incorporated           | Adult SMI and Addiction   | 10           | Yes                         |
| Prairie View Apartments         | Odd Fellow Lodge                | Adult SMI and Addiction   | 10           | Yes                         |
| (Pending TL RFP)                |                                 | Adult SMI and Addiction   | 8            | Yes                         |
|                                 |                                 |                           |              |                             |
|                                 |                                 |                           |              |                             |
| <b>IV - Grand Forks</b>         |                                 |                           |              |                             |
| Crisis Residential Unit         | Centre Inc                      | Adult SMI                 | 12           | Yes                         |
| Crisis Residential Unit         | Centre Inc                      | Adult Addiction           | 14           | Yes                         |
| Siewert Plains                  | Prairie Harvest                 | Adult SMI                 | 8            | Yes                         |
| Harvest Homes - lodge           | Prairie Harvest                 | Adult SMI                 | 12           | No                          |
| STEP - addiction                | Growing Together                | Women with Children       | 6            | Yes                         |
| Cornerstone                     | NEHSC                           | Adult Addiction           | 6            | Yes                         |
| DRD TL facility                 | NEHSC                           | Adult SMI                 | 8            | Yes                         |
|                                 |                                 |                           |              |                             |
|                                 |                                 |                           |              |                             |